

Enterprise Information Systems

From LEO I to ERP systems



Department of Information Systems

Paolo Spagnoletti

Associate Professor

Works as Associate Professor at LUISS University (Italy) and UiA. He holds a PhD in Information Systems. Scientific coordinator of the Master program in Cybersecurity Governance at Luiss and board member of the national Competence Center Cyber 4.0. He has experience in teaching digital innovation management and cybersecurity governance in France (PSL, Skema), UK (WBS) and Switzerland (UniL).

Agenda

- Digital technologies
- Enterprise Information Systems
- Data sources and Information requirements







<https://youtu.be/fifimBnxgnQ>

ops, your important files are encrypted.

When you see this text, then your files are no longer accessible, because they have been encrypted. Perhaps you are busy looking for a way to recover your files, but don't waste your time. Nobody can recover your files without our decryption service.

We guarantee that you can recover all your files safely and easily. All you need to do is submit the payment and purchase the decryption key.

Please follow the instructions:

Send \$300 worth of Bitcoin to following address:

1M...71E2HM...YT...D2D1f78mGSdza0+NhRUX



BBC Breaking News ✓
@BBCBreaking

Follow

Firms around the globe are reporting a major cyber-attack
bbc.in/2scYQbD

4:55 PM - Jun 27, 2017

186 2,894 1,315

The ambivalent ontology and incomplete nature of digital artifacts

Granular and modular

- Editable: reorganization, content addition/deletion
- Interactive: information exploration, material affordances
- Open and reprogrammable: change and modification by means of other digital objects, interoperability, deep interpenetration
- Distributed: transient assemblies spread over information infrastructures, borderless, fluid and crucially transfigurabile

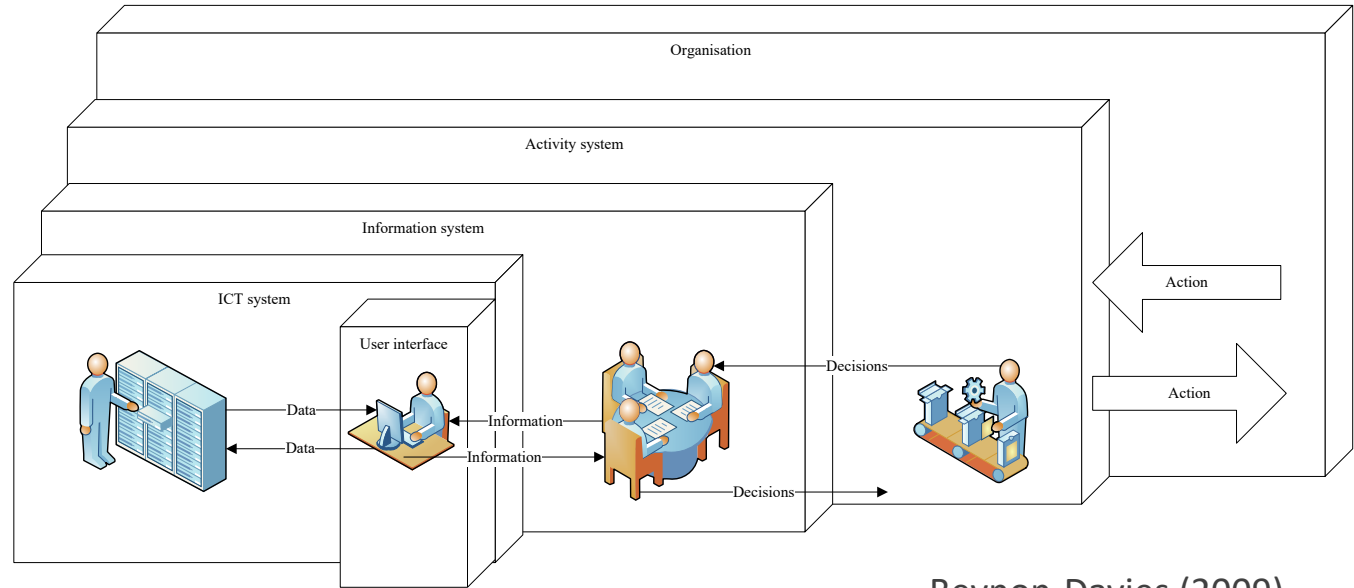
Intentionally incomplete and perpetually in the making

- Opportunity in accommodating tasks and operational links
- Problem of control over the artifact and its use



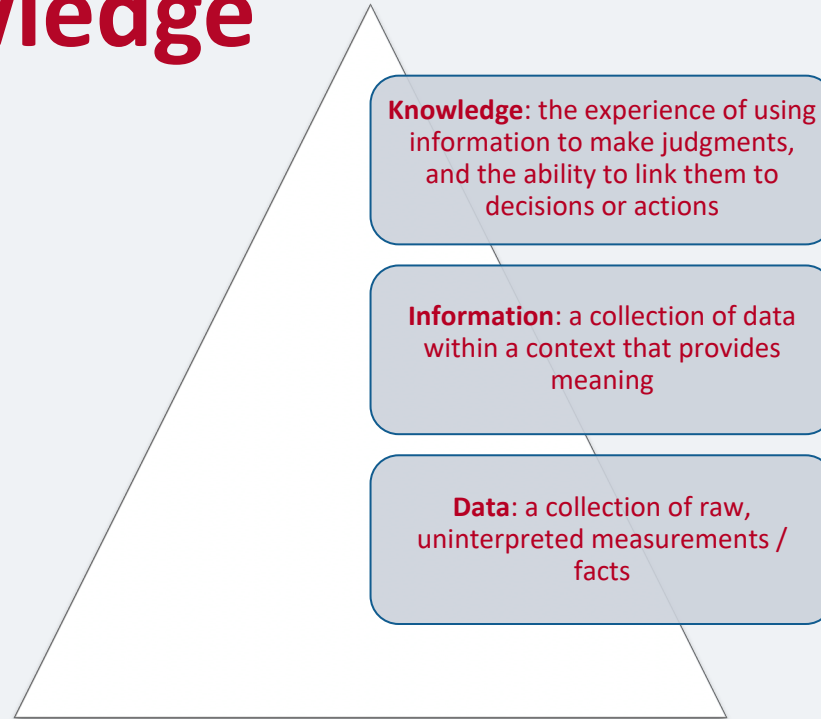
MISQ: Kallinikos et al 2013

Information Systems and Organizations



Beynon-Davies (2009)

Data, information and knowledge

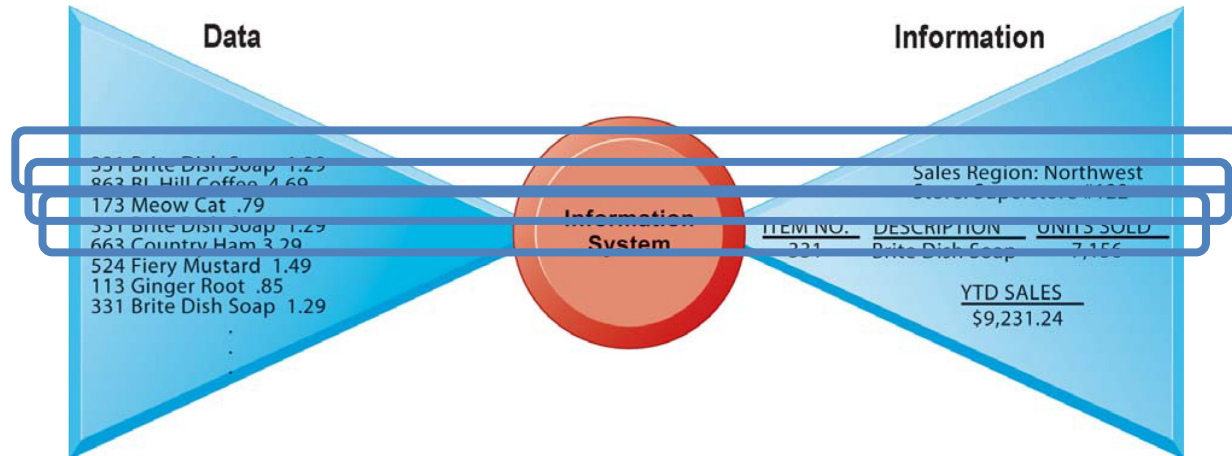


Layers of Information Systems

Human activity / behaviour > Social Science

Organisations > Management and Business

Technology > Computer Science



TED Ideas worth spreading WATCH DISCOVER

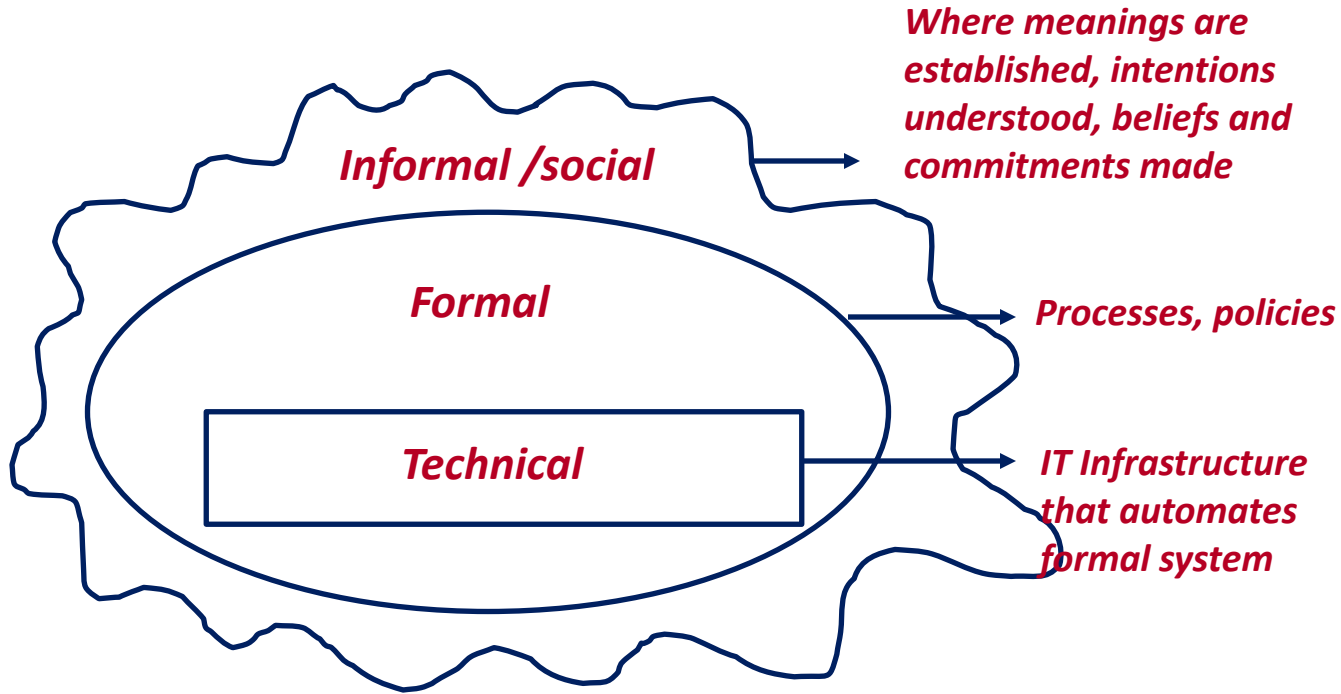
Share
Add to list
Like
Recommend

Derek Sivers | TEDIndia 2009

Weird, or just different?

2:28

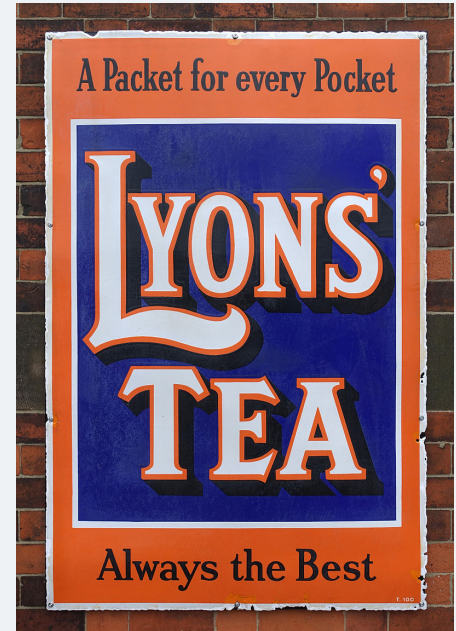
What is and how do we study IS?



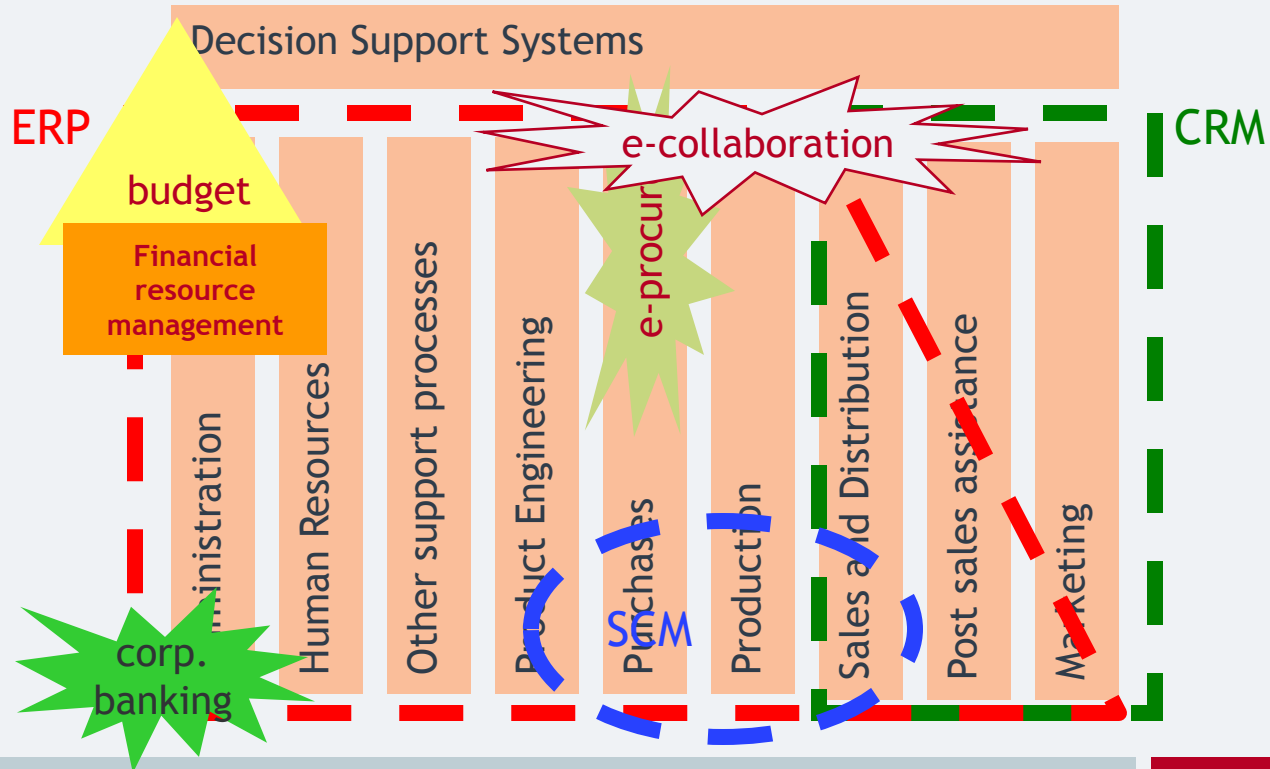
Stamper 1994

Exercise

- Search online information on the origins and initial design of the LEO I computer by J. Lyons and Co.
- Discussion:
 - which decisions are supported by the LEO I?
 - which data and information are managed by the first computer system?



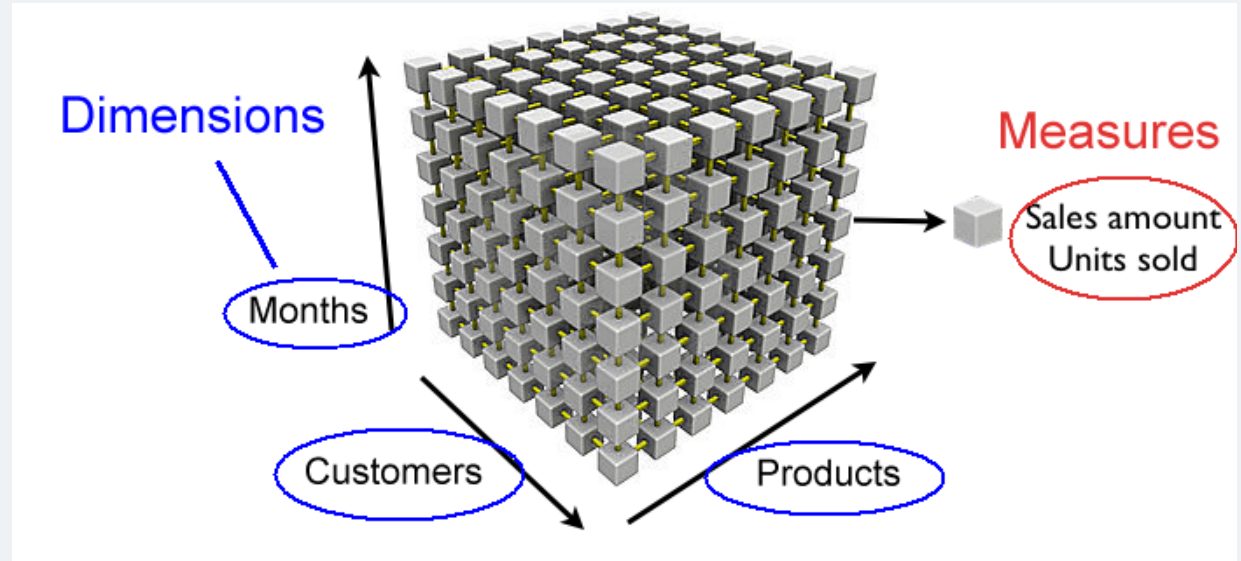
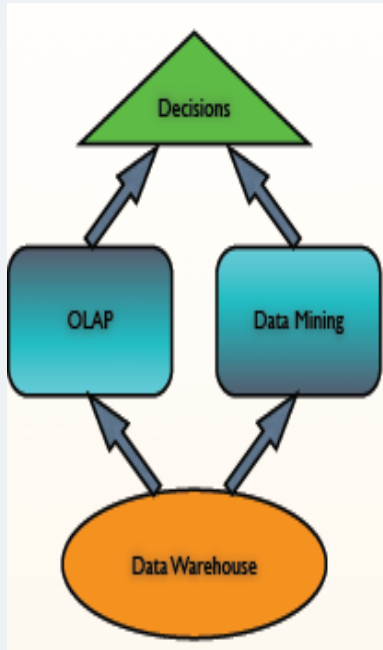
A map of Enterprise IS



Enterprise Resource Planning

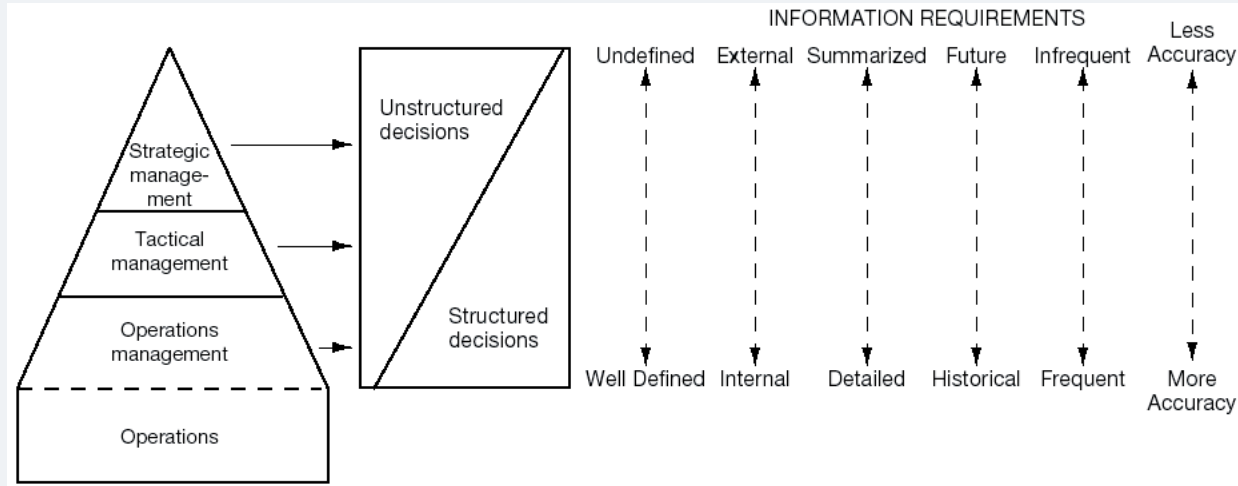


Decision support systems



The OLAP cube

Information requirements

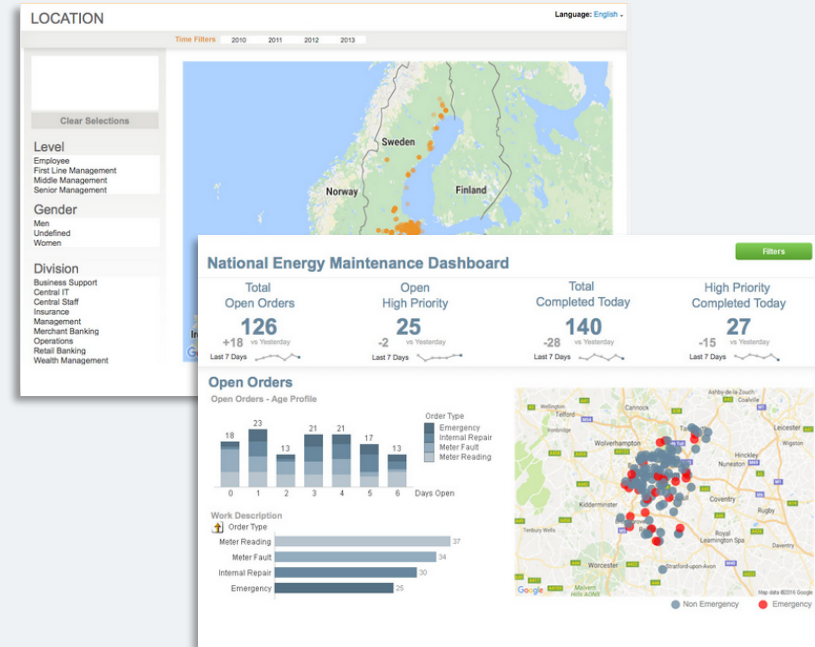


Exercise



<http://www.qlikview.com>

- Select and launch one of the available QlikView demos at <https://demos.qlik.com/qlikview>
- Discussion:
 - which decisions are supported by the system?
 - which are potential sources of data?
 - How are these information organized across dimensions?



Takk for at du hørte på!

Paolo Spagnoletti
Associate Professor in Information Systems
University of Agder
paolo.spagnoletti@uia.no